

IronRidge Ground Arrays are the strongest system available, and have been professionally engineered from top to bottom. They go up faster than any other, which saves time and money.

**Key Features**

**Save Cost** With Easily Sourced Schedule 40 Or 80 Steel Pipe

**Accommodates** Either 2" or 3" Implementations

**Supports Ballasted Or Embedded** Foundation Applications

**Key Attachment** Components Are Cast Steel Providing Extra Strength

**Multiple Panel Configurations** For Optimizing Specific Site Conditions

**No Drilling Or Welding** Required During Installation Process

**Backed By Industry Leading Warranty** 10 yr. Limited Product, 3 yr. Finish

**PE Certified** For Most States

**Best Customer Service And Support**

**IronRidge Ground Arrays** are a cost-effective and scalable mounting solution that support a wide range of site and terrain challenges. The versatile IronRidge Rail system combines with installer-supplied steel pipe to form a durable and cost-effective mounting structure.

**Top Cap**

- The heavy duty cast steel top caps secure quickly and easily to the schedule 40 pipe with 3 set screws
- Available to fit 2" and 3" pipe
- Cast steel ASTM A216



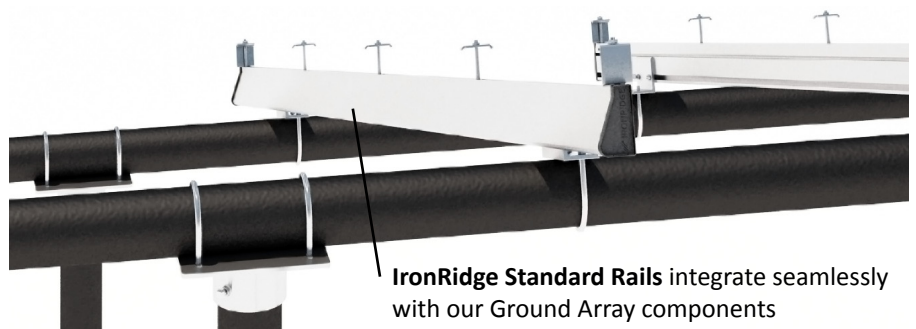
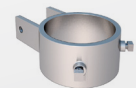
**Rail Connector**

- Intuitive construction
- Connects to IronRidge Standard Rail system
- Fits installer-supplied 2" and 3" pipe
- Modular panel design to decrease installation time



**Optional Diagonal Brace Kit**

For installations that require extra support, the diagonal brace kit includes the brace, sleeves and hardware for installation between north and south pair of support legs.



**IronRidge Standard Rails** integrate seamlessly with our Ground Array components

Max E-W Span Chart - 3" Ground Array												
Wind	Snow psf	Tilt Angle:	0°	5°	10°	15°	20°	25°	30°	35°	40°	45°
90 mph	0		16.6'	17.0	14.5	14.0	13.2	12.6	12.1	12.0	12.0	12.1
	10		15.3	15.5	14.0	13.7	13.1	12.6	12.1	12.0	12.0	12.1
	20		13.3	13.5	12.4	12.2	11.8	11.5	11.1	11.1	11.1	11.1
	30		12.5	12.7	11.8	11.6	11.2	11.0	10.7	10.6	10.7	10.7
110 mph	0		14.7	15.2	12.8	12.4	11.7	11.1	10.6	10.5	10.6	10.6
	10		14.2	14.4	12.8	12.4	11.7	11.1	10.6	10.5	10.6	10.6
	20		12.5	12.7	11.6	11.3	10.9	10.6	10.2	10.2	10.2	10.2
	30		11.9	12.0	11.0	10.8	10.5	10.2	9.9	9.8	9.8	9.9
								With diagonal bracing	Special requirement for rails: contact IronRidge			

Max E-W Span Chart - 2" Ground Array												
Wind	Snow psf	Tilt Angle:	0°	5°	10°	15°	20°	25°	30°	35°	40°	45°
90 mph	0		9.5'	9.7	8.3	8.0	7.6	7.2	6.9	6.8	6.9	6.9
	10		8.7	8.9	8.0	7.8	7.5	7.2	6.9	6.8	6.9	6.9
	20		7.6	7.7	7.1	7.0	6.7	6.5	6.4	6.3	6.3	6.4
	30		7.2	7.2	6.7	6.6	6.4	6.3	6.1	6.1	6.1	6.1
110 mph	0		8.4	8.7	7.3	7.1	6.7	6.4	6.1	6.0	6.0	6.1
	10		8.1	8.2	7.3	7.1	6.7	6.4	6.1	6.0	6.0	6.1
	20		7.2	7.3	6.6	6.5	6.2	6.0	5.8	5.8	5.8	5.8
	30		6.8	6.9	6.3	6.2	6.0	5.8	5.6	5.6	5.6	5.6
								With diagonal bracing	Special requirement for rails: contact IronRidge			

Dead Load (weight) = 3 psf; N-S Pier Spacing = 7 feet 6 inches  
 Cross pipe splices not permitted in end spans or middle 1/3 of interior spans  
 Topographic (wind) factor = 1.0 (no topographic effects)  
 Exposure Category B (exposure category C spans will be longer)

\* For more information visit [www.ironridge.com](http://www.ironridge.com) to download certification letters, installation guides, and to use our ground array configuration software.

## Why IronRidge



**Experience** - Designing/manufacturing solar mounting products since 1996

**Single Source** - Roof mounts, ballasted mounts, large arrays, and more; *a solution for your specific application*

**Customer Satisfaction** - Customer service and technical support to help you succeed

On-line Resources Available:

- Video Tutorials
- Product Configurators
- Product Certifications
- Installation Guides
- Data Sheets
- Reseller Locator



**Sales: 800-227-9523**  
[sales@ironridge.com](mailto:sales@ironridge.com)

[www.IronRidge.com](http://www.IronRidge.com)  
 1435 Baechtel Road  
 Willits, CA 95490