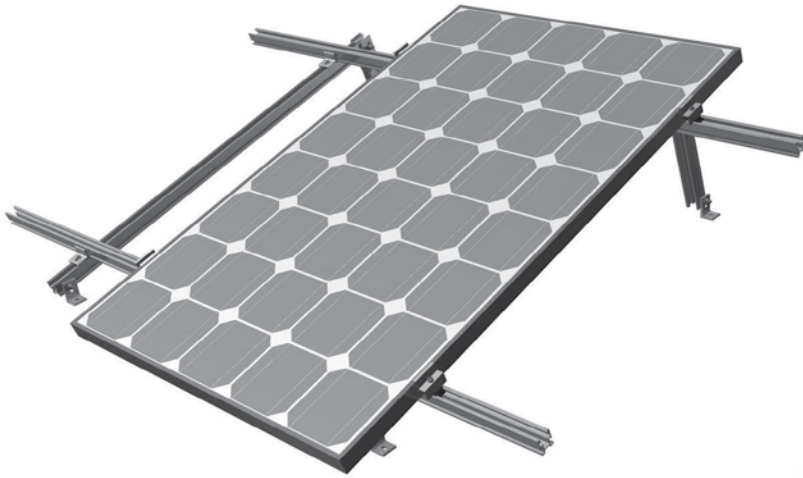


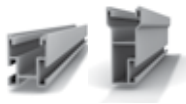


Mounting systems for solar technology



CrossRail for Tilt Up Systems:

- Use the same Crossrail 48 for tilt legs
- Adjustable Tilt Up bracket installs in seconds
- Adjustable Climber connects NS to EW CrossRails
- UL 2703 / ETL approved integrated bonding
- Super fast, simple installation:
 - No drilling, no bonding jumpers
 - Pre-assembled clamps
 - Robust bonding rail splices
 - Low part count



CrossRail 48 & CrossRail 80

Material: aluminum
Standard length: 164" or custom

New



CrossRail Tilt Up Bracket Kit

Material: aluminum



L-Foot w/ T-Bolt and Flange Nut

Material: aluminum
Hardware: stainless steel



Climber Set

Material: aluminum



Rail Connector Set CrossRail 48 & 80

Material: aluminum splice
Hardware: stainless steel



Enphase 215 Mounting Kit

Material: stainless steel



Module End Clamp Set

Material: aluminum, mil, dark
Hardware: stainless steel



End Cap for CrossRail 48

Material: high strength nylon (PA66)



Module Middle Clamp Set

Material: aluminum, mil, dark
Hardware: stainless steel



Omega Wire Management Clip

Material: high density plastic (PP)



Burndy WEEB Lug 8.0 + Hardware

Weeb Lug 8.0 Material: tin plated copper
Hardware: stainless steel



Burndy KMC WEEB Clip

Material: stainless steel
Pre-assembled with Mid Clamp



HEYClip SunRunner Cable Clip SS, S6404

Material: stainless steel

CROSSRAIL FOR TILT UP SYSTEMS

For more information contact: sales@everest-solarsystems.com | Phone: 760-301-5300

