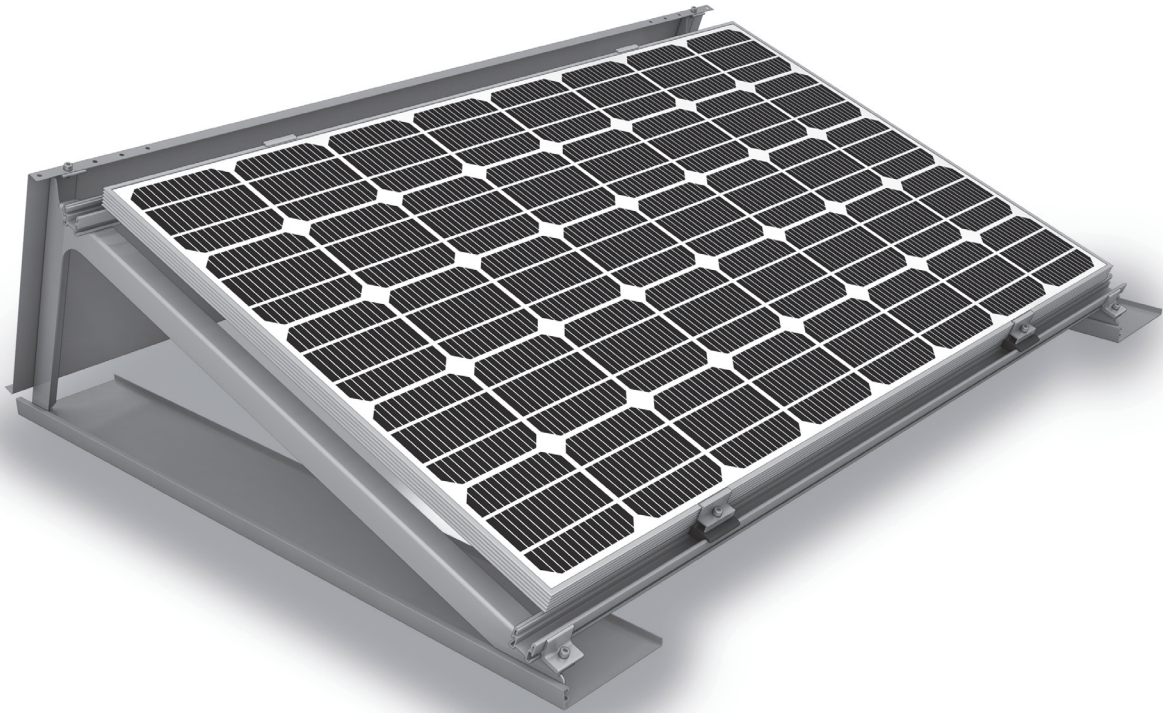


Mounting systems for solar technology



NEW!

- ↪ For roofs with limited ballasting options, south facing
- ↪ Optimum roof utilisation thanks to minimum shade spacing
- ↪ Based on the new K2 LevelRail
- ↪ Elevation of 10° or 20° for low wind loads
- ↪ Aerodynamic design with rear-mounted windbreaker; System wind tunnel tested by leading structure aerodynamics technicians
- ↪ Easy to assemble, simple K2 Systems installation
- ↪ For module types 982 - 1001 mm
- ↪ Made with high grade materials: Aluminum, galvanised steel



K2 SYSTEMS
ELEVATION SYSTEMS
S-LEVEL SYSTEM

Mounting systems for solar technology



K2 Systems GmbH
Riedwiesenstraße 13 - 17
71229 Leonberg
Germany
Phone +49 (0) 7152 - 3560 - 0
Fax +49 (0) 7152 - 3560 - 179
info@k2-systems.de
www.k2-systems.com

K2 Systems SARL - Agence FRANCE NORD
4, rue des Hérons
67960 Entzheim
France
Tel. +33 (0) 3 88 21 66 02
Fax +33 (0) 3 88 21 66 03
info@fr.k2-systems.eu
www.k2-systems.com

K2 Systems s.r.l.
Via Madonna dello Schioppo 67
Secondo Piano Int. 17 - 19
47521 Cesena FC
Italy
Tel. +39 0547 63 20 80
Fax +39 0547 63 50 22
info@it.k2-systems.eu
www.k2-systems.com

K2 Systems SARL - Agence FRANCE SUD
19 Avenue du Pré de Challes
Parc des Glaisins
74940 Annecy le Vieux
France
Tel. +33 (0) 4 50 51 22 53
Fax +33 (0) 4 50 51 16 41
info@fr.k2-systems.eu
www.k2-systems.com

